



SHALBY
MedTech

IMPLANTING POSSIBILITIES. IMPROVING LIVES.

ETERNITYTM

ETERNITY™

DUAL MOBILITY CUP SYSTEM

CoCr-free

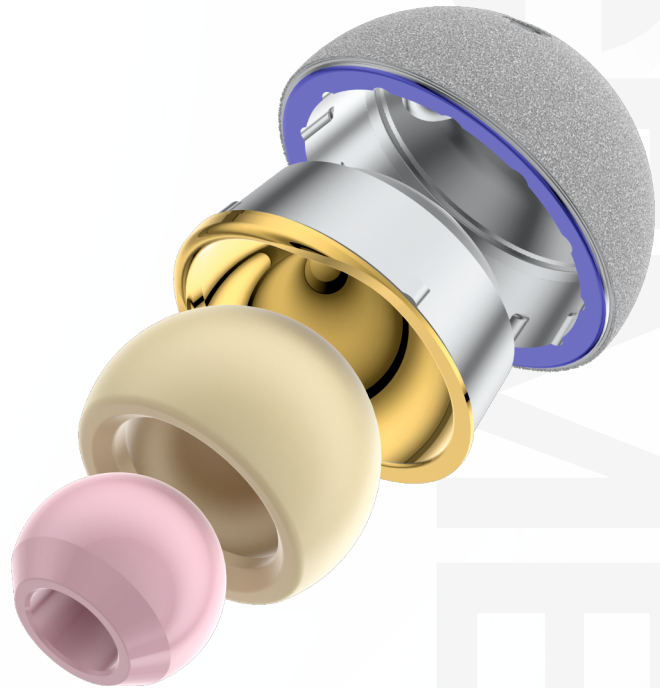
Titanium-Titanium taper

Ceramic-like

TiNbN bearing

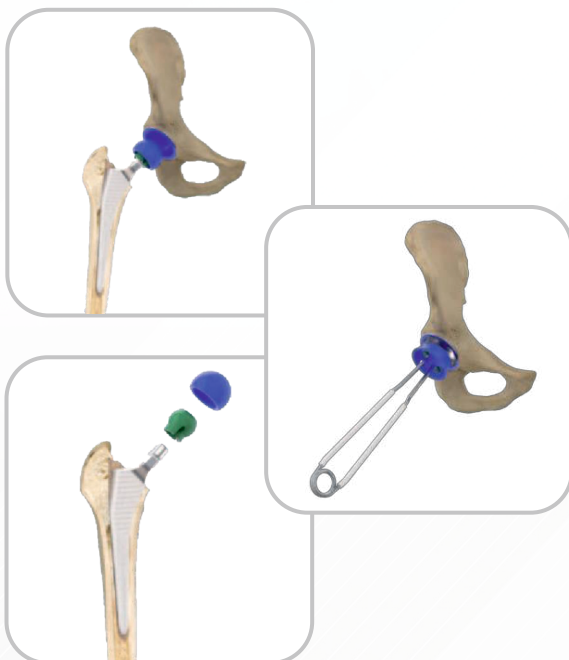
10° elevated rim

against luxation



Double Mobility Insert (optional)

Where muscle and tendon laxity is considered critical, a Double Mobility bearing can be used to reduce the risk of luxation by increasing the Range of Motion Double Mobility Heads using 28mm Femoral Heads will only couple with #F, #G and #H cup tapers while Double Mobility Heads used with 22 mm Femoral Heads will only couple with #D cup tapers.



Trial Reduction

Plug in the Double Mobility Trial Liner selecting the Trial whose color is equivalent to the color of the implanted cup rim.

Plug in the trial Femoral Head into the Double Mobility trial head, whose color is the same of the Double Mobility Trial Liner used previously, then proceed with the total joint trial reduction.

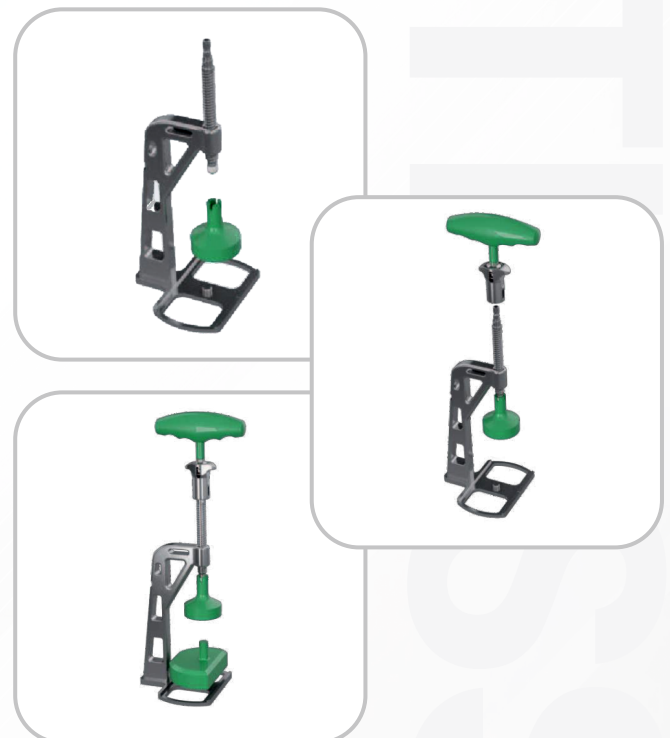


Liner Implantation

Proceed with inserting by hand the final Double Mobility Liner and impact it with the standard liner impactor selecting the right impactor (D32 for Yellow Trial, and D36 for all other colors).

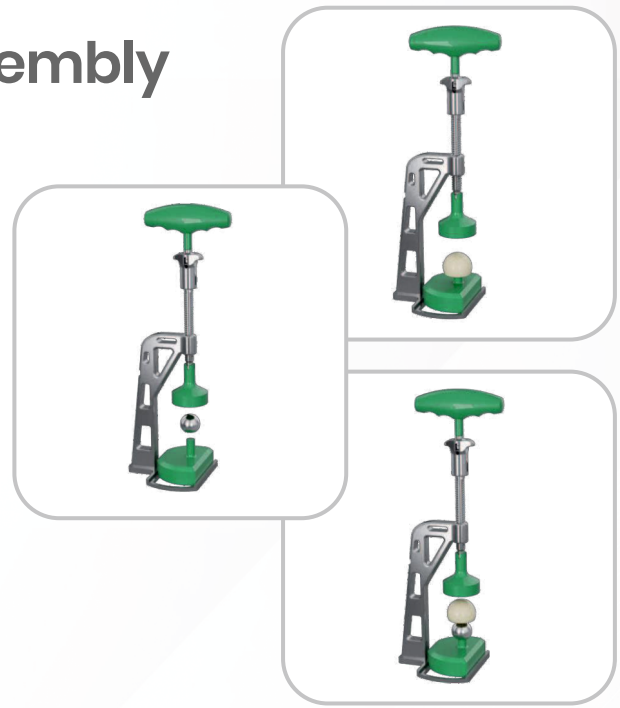
Press-assembly

Back table assembly of the Double Mobility Head and corresponding Femoral Head is required. Proceed by assembling the Double Mobility Press component by placing the Press Stand flat on the table and screw on the T-Handle and the plastic cone portion of the press. Put the Femoral Head Supporting Piece into the base of the Press.



Final Femoral Head and Double Mobility Head Assembly

- Open the press by turning the T-handle counter- clockwise.
- Place the Femoral Head onto the Head Supporting Piece and then place the Polyethylene Head onto the Femoral Head.
- Once the Femoral Head and polyethylene Head are in a vertical position, tighten the Press until they are fully lodged together After insertion, the air confined between the head and insert is usually released, resulting in a characteristic noise which gradually releases the pressure on the T-handle.
- After the head and insert are assembled, verify that the coupling has complete mobility.



Note : Ensure that the inside of the shell is clean and free of soft tissue or other debris, which could prevent the polyethylene insert from properly seating in the shell.



Final Femoral Head and Double Mobility Head Implantation

Plug the final Femoral Head on the stem taper, making sure that the final stem taper is cleaned and does not present any tissue residuals. After positioning, gently impact the final Femoral Head and Double Mobility Head with the standard Femoral Head impactor. Proceed with the final implant reduction.



SHALBY
MedTech

Address: Shalby Hospitals, Opp: Karnawati Club, S. G. Highway, Near Prahladnagar Garden, NA, AHMEDABAD, Ahmedabad-380015, Gujarat, India

Email: infomedtech@shalby.org | **Phone:** +91 6357007339